

275



X1084

Bartscher GmbH
Franz-Kleine-Str. 28
D-33154 Salzkotten
Germany

Phone: +49 5258 971-0
Fax: +49 5258 971-120
Service hotline: +49 5258 971-197
www.apexa.de



Version: 1.0

Date of preparation: 2021-07-14

Original instruction manual

1	Safety	2
1.1	Explanation of Signal Words.....	2
1.2	Safety instructions.....	3
1.3	Intended Use	6
1.4	Unintended Use	6
2	General information	7
2.1	Liability and Warranty	7
2.2	Copyright Protection	7
2.3	Declaration of Conformity	7
3	Transport, Packaging and Storage	8
3.1	Delivery Check.....	8
3.2	Packaging	8
3.3	Storage	8
4	Technical Data.....	9
4.1	Technical Specifications	9
4.2	List of Components of the Appliance	10
4.3	Functions of the Appliance.....	11
5	Installation and operation	11
5.1	Installation.....	11
5.2	Operation	12
6	Cleaning	18
6.1	Safety Instructions for Cleaning	18
6.2	Cleaning.....	18
7	Possible Malfunctions.....	21
8	Disposal.....	22



Read this instruction manual before using and keep it available at all times!

This instruction manual contains information about installation, operation and maintenance of the appliance and constitutes an important source of information and reference guide. The knowledge of all operational and safety instructions included in this manual is a prerequisite for safe and proper handling of the appliance. Additionally, accident prevention, occupational health and safety, and legal regulations in force in the area the appliance is used apply.

Before you start using the appliance, especially before turning it on, read this instruction manual in order to avoid personal injuries and property damages. Improper use may cause damage.

This instruction manual forms an integral part of the product and must be stored in an immediate vicinity of the appliance and be available at all times. The instruction manual should be transferred together with the appliance.

1 Safety

EN

This appliance has been manufactured in accordance with technical standards currently in force. However, the appliance may be a source of hazards if used improperly or contrary to its intended purpose. All persons using the appliance must consider information included in this instruction manual and observe safety instructions.

1.1 Explanation of Signal Words

Important safety instructions and warning information are indicated in this instruction manual with appropriate signal words. You must strictly follow the instructions, to prevent accidents, personal injuries and property damages.



DANGER!

The signal word **DANGER** warns against hazards that lead to severe injuries or death if the hazards are not avoided.



WARNING!

The signal word **WARNING** warns against hazards that may lead to moderate or severe injuries or death if the hazards are not avoided.



CAUTION!

The signal word **CAUTION** warns against hazards that may lead to light or moderate injuries if the hazards are not avoided.

IMPORTANT!

The signal word **IMPORTANT** indicates possible property damages, which may occur if safety instructions are not observed.

NOTE!

The symbol **NOTE** indicates subsequent information and guidelines for the user on usage of the appliance.

EN

1.2 Safety instructions

Electrical Current

- Too high a mains voltage or incorrect installation may cause electric shock.
- The appliance may be connected only if data on the rating plate correspond with the mains voltage.
- To avoid short-circuit, the appliance should be kept dry.
- If there are malfunctions during operation, disconnect the appliance from the power supply.
- Do not touch the appliance's plug with wet hands.
- Never take hold of the appliance if it has fallen into water. Immediately disconnect the appliance from the power supply.
- Any repairs or housing opening may be carried out by professionals and relevant workshops only.
- Do not transport the appliance, holding it by the power cord.
- Do not allow the power cord to come into contact with heat sources or sharp edges.
- Do not bend, pinch nor knot the power cord.

- Always completely unwind the power cord.
- Never place the appliance or other objects on the power cord.
- Always take hold of the plug to disconnect the appliance from the power supply.
- Check the power cord regularly for damage. Do not use the appliance if the power cord is damaged. If this cable is damaged, it must be replaced by customer service or a qualified electrician in order to avoid dangers.

Flammable Materials

- Never subject the appliance to contact with high temperature sources, e.g.: oven, furnace, open flame, heat generating devices, etc.
- To avoid fire hazard, clean the appliance regularly.
- Do not cover the appliance with, e.g., aluminium foil or cloths.
- Use the appliance only with materials designated to this end and with correct temperature settings. Materials, groceries and left-overs remaining in the appliance may catch fire.
- Never use the appliance near flammable or inflammable materials, e.g.: petrol, spirit, alcohol, etc. High temperature triggers evaporation of these materials, and, as a result of contact with sources of ignition, an explosion may occur.
- In case of fire, disconnect the appliance from the power supply before attempting suitable fire-extinguishing actions.
- Never attempt to extinguish fire with water if the appliance is connected to the power supply. Following extinction of fire, ensure sufficient fresh air inflow.

EN

Supervised Usage only

- Only supervised appliance may be used.
- Always remain in an immediate vicinity of the appliance.

Operating personnel

- This appliance is not intended to be used by persons (including children) with limited physical, sensory or mental capabilities, nor by persons with limited experience and/or limited knowledge.
- Children should be supervised to ensure that they are not playing with or switching the appliance on.

Improper use

- Unintended or prohibited use may cause damage to the appliance.
- The appliance may only be used in a technically flawless condition, providing for safe use.

Safety

- The appliance may only be used with connections in a technically flawless condition, providing for safe use.
- The appliance may only be used clean.
- Use only original spare parts. Never attempt to repair the appliance on your own.
- Do not attempt to modify nor alter the appliance.

1.3 Intended Use

As described below, every use of the appliance for a purpose differing and/or diverging from its intended standard use, is prohibited and considered to be an unintended use.

The following is an intended use:

- Grinding of roasted coffee beans.

The appliance is intended for home use only.

This appliance is intended for use in households and similar places, e.g.:

- in employee canteens in shops, offices, and similar areas;
- on farms;
- by customers in hotels, motels, and other typical accommodation establishments;
- in lodging-houses.

EN

1.4 Unintended Use

An unintended use may lead to personal injuries or property damages caused by hazardous voltage, fire or high temperature. The appliance may only be used to perform tasks described in this instruction manual.

The following is an unintended use:

- Processing of hard seeds, spices, nuts, etc.

2 General information

2.1 Liability and Warranty

All information and instructions in this instruction manual account for legal regulations in force, current level of technical engineering knowledge as well as our expertise and experience, developed over the years. If special models or additional options are ordered, or state-of-the-art technical solutions were implemented, the actual scope of delivery of the appliance may, in some circumstances, differ from descriptions and numerous drawings in this instruction manual.

The manufacturer is not liable for any damages nor faults stemming from:

- failure to observe instructions,
- unintended use,
- technical alterations introduced by the user,
- usage of unapproved spare parts.

We reserve the right to introduce technical modifications to the product, intended for improvement of the appliance and its performance.

2.2 Copyright Protection

This instruction manual, and texts, drawings and images included in it, as well as its other components are copyright protected. It is prohibited to reproduce this instruction manual (including its excerpts), in any form and by any means, and to use and/or transfer its content to third parties without manufacturer's written permission. Violation of the above results in obligation to pay compensation. We reserve the right to claim further damages.

EN

2.3 Declaration of Conformity

The appliance meets the currently applicable standards and guidelines of the European Union. We confirm the above in the EC Declaration of Conformity. We may provide relevant Declaration of Conformity upon request.

3 Transport, Packaging and Storage

3.1 Delivery Check

Immediately upon reception, check the delivery for completeness and possible shipping damage. In the case of visible transport damage refuse to accept the appliance or accept it conditionally. Mark and note the scope of damage in shipping documents/consignment list of the shipping company and lodge a complaint. Concealed damage must be reported immediately upon its discovery, as compensation claims may only be filed within applicable time limits.

If you find that parts or accessories missing, please contact our Customer Service Department.

3.2 Packaging

Do not dispose of the appliance cardboard box. It may be used to store the appliance when relocating or when shipping the appliance to our service point in the case of any damages.

The packaging and its elements are made of recyclable materials. Particularly, these are: plastic films and bags, cardboard box.

When disposing of the packaging, observe applicable domestic regulations. Recyclable packaging materials should be recycled.

EN

3.3 Storage

Leave the packaging closed until installation of the appliance; observe external indications concerning method of placing and storage. Store the packaging in the following conditions only:

- in closed rooms;
- in dry and dust-free surrounding;
- away from aggressive agents;
- in a location protected against sunlight;
- in a location protected against mechanical shocks.

In the case of extended storage (over three months), make sure you check the condition of the packaging and the parts regularly. If needed, replace the packaging with a new one.

4 Technical Data

4.1 Technical Specifications

Name:	Coffee grinder 275
Art. No.:	X1084
Material:	ABS / PP plastic
Coffee beans container volume, in g:	275
Ground coffee container volume, in g:	100
Maximum rotational speed, in RPMs:	10000
Degree of protection:	II
Connected load:	0,16 kW 220-240 V 50/60 Hz
Dimensions (W x D x H), in mm:	117 x 190 x 315
Weight, in kg:	1,7

We reserve the right to implement technical modifications.

EN

Version / Characteristics

- Version: electric
- Colour: black
- Control:
 - electronic
 - keys
- Digital display
- ON/OFF switch
- Overheating protection
- Indicator light: operating mode

4.2 List of Components of the Appliance



Fig. 1

- | | |
|-------------------------------|--------------------------------|
| 1. Grinder lock | 2. Grinder |
| 3. Grinding adjustment ring | 4. Control panel |
| 5. Housing | 6. Coffee beans container |
| 7. Coffee beans container lid | 8. Ground coffee container lid |
| 9. Ground coffee container | 10. Cleaning brush |

4.3 Functions of the Appliance

Large selection of grinding settings makes it possible to grind coffee beans for the purpose of preparation of various coffee beverages.

5 Installation and operation

5.1 Installation

Unpacking / Positioning

- Unpack the appliance, remove all external and internal packaging elements and shipment safeguards.



CAUTION!

Choking hazard!

Prevent children from accessing package materials, for instance: plastic bags and EPS.

- If the appliance is covered with a protective film, remove it. Remove the film slowly, so no glue residues are left. Remove any glue residues with the use of a suitable solvent.
- Be careful not to damage the rating plate and warning labels fixed on the appliance.
- **Never** place the appliance in humid or wet environment.
- Place the appliance in a way making the connections easily accessible, so that they may be quickly disconnected if such a need arises.
- The appliance should be placed on surfaces that are:
 - even, with sufficient bearing capacity, resistant to water, dry and resistant to high temperatures;
 - sufficiently large, and thus enabling usage of the appliance with no problems;
 - easily accessible;
 - well ventilated.
- Maintain sufficient clearance from table edges. The appliance might turn over and fall down.

- Leave at least 10 cm clearance from flammable walls and items.

Power supply connection

- Verify if technical data of the appliance (see rating plate) correspond with the local electric power grid specification.
- Connect the appliance to a single, properly grounded mains socket with protective contact. Do not connect the appliance to a multi-socket.
- The power cord should be laid in a way preventing anyone from threading on it or tripping against it.
- Do not use the appliance with an external timer or remote control.

5.2 Operation

Before Use

1. Prior to first operation, clean the appliance and its equipment according to instructions in section '**Cleaning**'.
2. Dry all the cleaned parts and surfaces thoroughly with a soft cloth.

EN

Removing Coffee Beans Container

1. Make sure that the coffee grinder is disconnected from the electric supply.

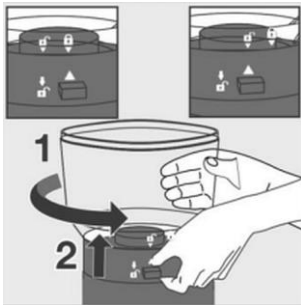


Fig. 2

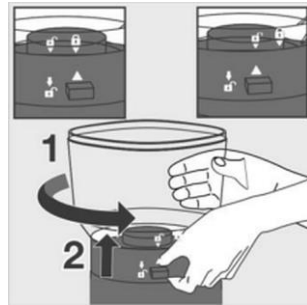





Fig. 3

2. Press and hold the coffee beans container release lever  that is located opposite to the grinding adjustment marking.
3. With your other hand rotate the coffee beans container counter-clockwise, until the unlock symbol  is aligned with the  marking.
4. Then, lift the coffee beans container up.

EN

Installing Coffee Beans Container

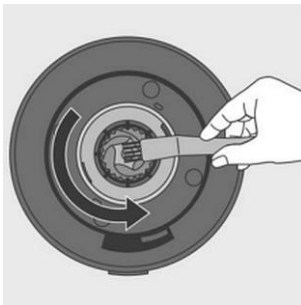


Fig. 4

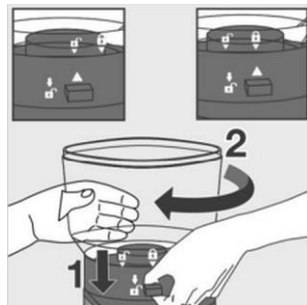




Fig. 5

1. Make sure there is no ground coffee on the grinder lock. If this is the case, clean it off with the enclosed cleaning brush.
2. Align the unlock symbol  on the base with the  marking on the coffee beans container.

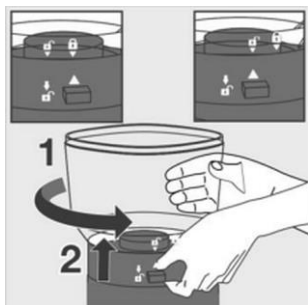


Fig. 6

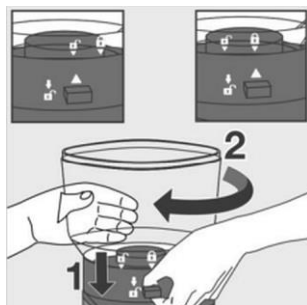





Fig. 7

3. Press and hold the coffee beans container release lever  that is located opposite to the grinding adjustment marking.
4. With your other hand rotate the coffee beans container clockwise, until the unlock symbol  is aligned with the  marking.

NOTE!

If the coffee beans container is installed incorrectly, the coffee grinder cannot be switched on.

NOTE!

The coffee beans container is equipped with a latch door system, thus it may secure coffee beans inside. This system makes it possible to remove the coffee beans container from the grinder, and coffee beans will not spill out.

Fill with Coffee Beans

1. Install the ground coffee container with its lid in the appliance.
2. Make sure that the entire assembly is correctly installed.
3. Open the coffee beans container lid.



Fig. 8



Fig. 9

4. Fill the coffee beans container with the selected whole coffee beans.

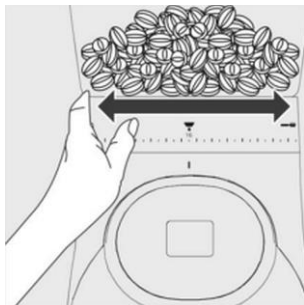


Fig. 10

5. Use the lid to close the coffee beans container.

Now, you may set the grinder to the selected grinding degree.







The coffee grinder features 31 grinding settings.

6. Rotate the coffee beans container until you set the selected grinding degree.

NOTE!

Avoid setting grinding degree during operation, as this may influence the consistency of the ground coffee.

Recommendations for Grinding Degree Setting

	Moka pot	Espresso coffee maker	Syphon coffee maker	Filter coffee maker	Insert filter pot	French Press infuser
Coffee type						
Grinding degree	fine	medium fine	medium	medium	medium coarse	coarse
Setting	1–2	3–5	6–10	11–20	17–25	26–31

Operating Elements / Digital Display

EN



Fig. 11

- 11. Digital display
- 12. Timer key (1–25 seconds)
- 13. Start/Stop key
- 14. Number of cups selection button (1–10)


Coffee beans grinding

1. Install the coffee beans container in the appliance.
2. Fill the coffee beans container with the required amount of coffee.
3. Select the right coffee beans grinding degree by rotating the grinding adjustment ring. Observe indications in the section '**Recommendations for Grinding Degree Setting**'.

4. Plug the appliance into a suitable single socket.

A single acoustic signal sounds.

The digital display shows '01', which means that the appliance is switching to 'cup mode' and you may prepare ground coffee for one cup of coffee.

5. Cup selection button 

When this key is pressed, the digital display shows '01'.

The standard setting range is 1–10 cups.

Keep pressing the key repeatedly until the digital display shows the required number of cups (01, 02, 03, 04 ... 10).

To end with, press the Start/Stop key to start coffee beans grinding.

To interrupt the grinding process, press the Start/Stop button again.

6. Timer button 

When this key is pressed, the digital display shows '00'.

Press the Start/Stop key to start coffee beans grinding.

The duration of grinding cycle depends on the selection of number of cup and may be displayed during the grinding cycle through pressing of timer button.

The maximum grinding cycle lasts for 25 seconds.

7. Start/Stop key 

After selection of number of cups, press the Start/Stop key to start coffee beans grinding.

To interrupt the grinding process, press the Start/Stop button one more time.

8. After grinding, remove the ground coffee container from the appliance.
9. Prepare coffee to your liking.

6 Cleaning

6.1 Safety Instructions for Cleaning

- Before cleaning, disconnect the appliance from the power supply.
- Leave the appliance to cool down completely.
- Make sure water does not enter the appliance. Do not immerse the appliance in water or other liquids during cleaning. Do not clean the appliance with a pressurized water jet.
- Do not use any sharp or pointed, nor metal implements (knife, fork, etc.). Sharp or pointed implements may damage the appliance, and when in contact with live parts, they may cause electric shock.
- For cleaning, do not use any scouring agents that contain solvents nor corrosive cleaning agents. They may damage the surface.

6.2 Cleaning

1. Clean the appliance daily.

ATTENTION!

Regular cleaning provides for consistent grinding effects.

2. Never clean the motor block, power cord not mains plug immersed in water or under running water. Wipe them with a slightly damp cloth only and leave them to dry thoroughly.
3. During cleaning of the appliance's detachable elements and the grinder, observe the following pictures with indications.

1. Unlock the coffee beans container	2. Remove coffee beans
3. Lock the coffee beans container	4. Run the grinder empty
5. Remove the coffee beans container	6. Remove the grinder lock
7. Clean the grinder lock with the cleaning brush	8. Clean the grinder with the cleaning brush
9. Clean the ground coffee outlet with the cleaning brush	10. Press the grinder lock tightly into its position
11. Lock the grinder lock	12. Install the coffee beans container and set it in position
13. Lock the coffee beans container	

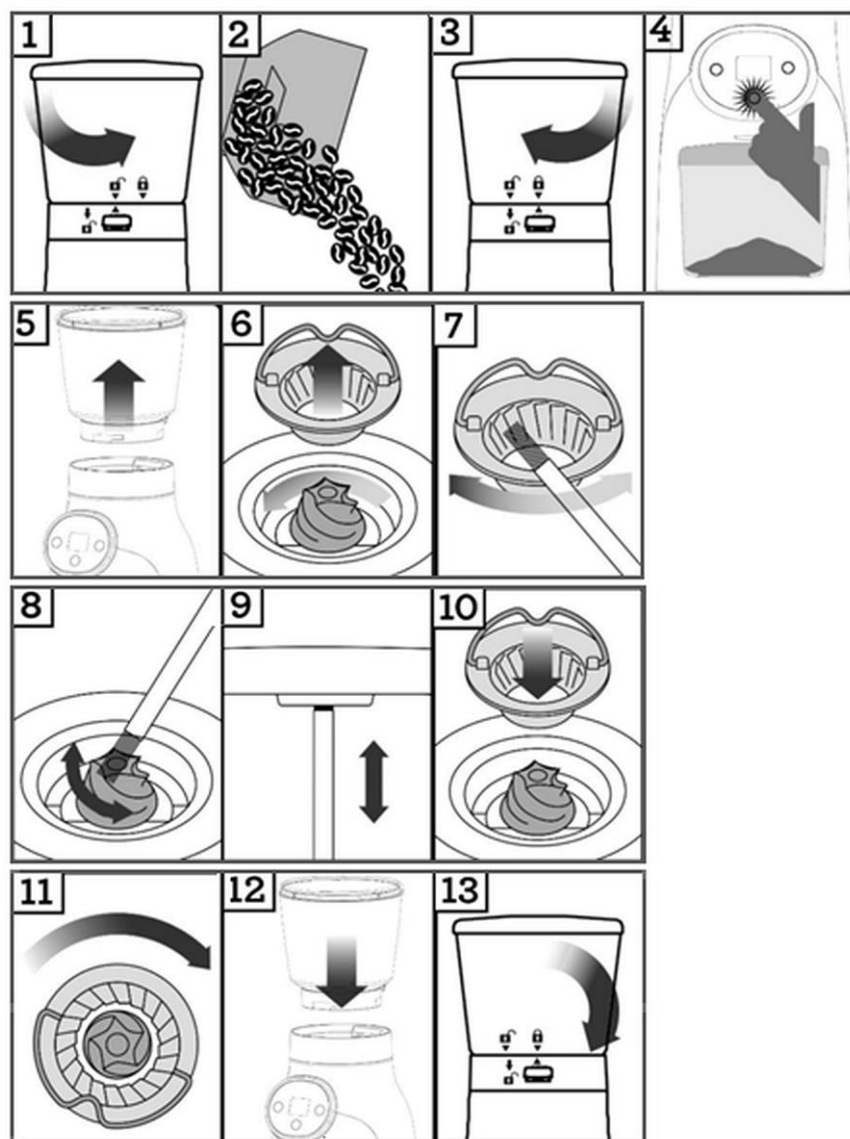


Fig. 12

Cleaning the Grinder Lock and the Grinder

1. Remove the grinder lock to clean the grinder. Proceed the following way:

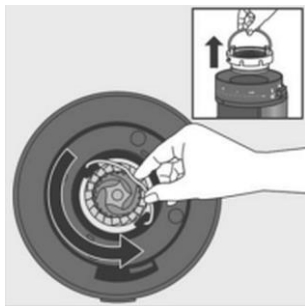


Fig. 13

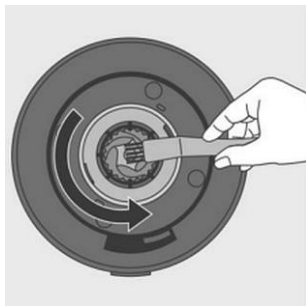


Fig. 14

2. Pull the grinder lock lever up. Hold the lever firmly and rotate it once, counter-clockwise.
3. Lift the grinder lock vertically and remove it.

4. Now, clean the open grinder with the enclosed cleaning brush.

EN

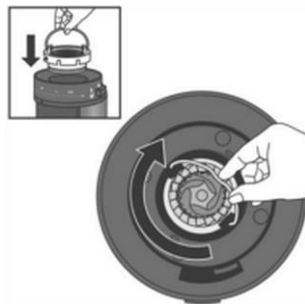


Fig. 15

5. Clean the remove grinder lock with the cleaning brush.
6. Use the lever to re-engage the grinder lock and rotate it once, clockwise.
7. Press the lever down and lock the grinder.

Possible Malfunctions

Cleaning the Container

1. Clean the coffee beans container, ground coffee container and lids in warm water, using a soft cloth or sponge and a mild cleaning agent.
2. Rinse thoroughly with fresh water.
3. Finally, dry washed elements with a soft cloth.

7 Possible Malfunctions

The table below contains descriptions of possible causes and solutions to malfunctions or errors during operation of the appliance. When malfunction cannot be removed, contact the technical service.

In such a case, provide article number, model name and serial number. These data may be found in the rating plate.

Error Codes in the Digital Display	Cause	Solution
E1	No coffee beans container is installed on the coffee grinder or the coffee beans container is installed incorrectly	Install the coffee beans container correctly and lock it
E2	Following 5 cycles of grinding one by one, the appliance switches off	Disconnect the appliance from power supply, leave it to cool down and then restart
	Motor is overheated	Leave the appliance to cool down for at least 30 minutes, and then restart

EN

8 Disposal

Electrical Appliance



Electric appliances are marked with this symbol. Electrical appliances must be disposed of and recycled in a correct and environmentally friendly manner. You must not dispose of electric appliances with household waste. Disconnect the appliance from the power supply and remove power cord from the appliance.

Electrical appliances should be returned to designated collection points.